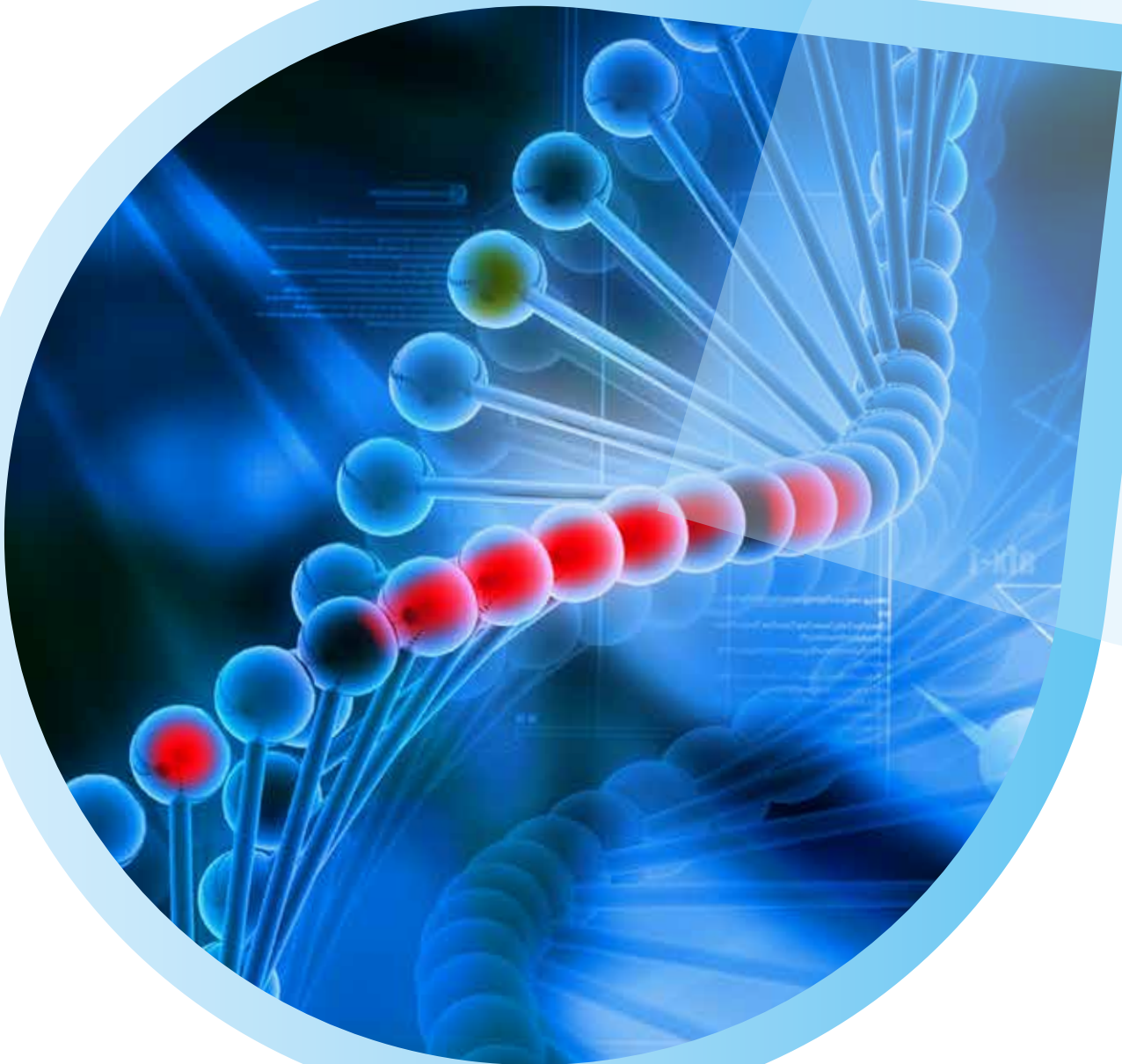


**Promotor<sup>®</sup>**

# Nucleic Acid Extraction Solution

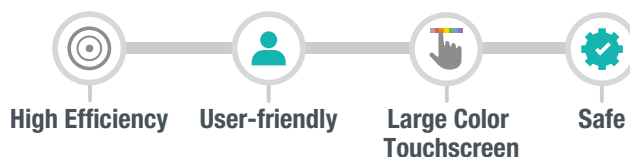


# ►►► NES-32 Nucleic Acid Extraction System

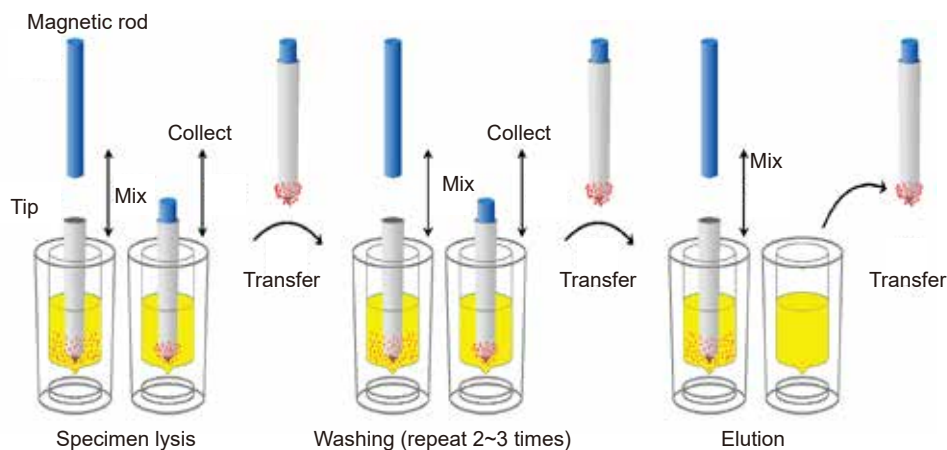


## Features & Benefits

- Up to 32 samples/run
- High purity & high yield
- Ready-to-use reagents
- 8-inch large color touch screen
- Aviation material heating base
- UV lamp and disposable consumables eliminate contamination



## Principle



## Specifications

Parameters	Specifications
Method	Magnetic Beads
Processing Volume	20 to 1,000µL
Sample Capacity	Up to 32 samples per run
Sample Type	Serum, Plasma, Swab, Feces, Urine
Well-to-Well CV	≤1.5%
Collection Rate of Magnetic Particles	≥98%
Heating Temperature	Lysis Temp (from RT to 120°C) Elution Temp (from RT to 120 °C)
Sterilization	UV Lamp
Processing Time	12-40 min
Dimensions	437×512×470 mm (W×D×H)
Instrument Port	USB/LAN
Power Source	100-240 VAC, 50 Hz/60 Hz, 600VA

# Ordering Information

Product Name	Catalog No.	Components		Type	Specimen	Kit Size
<b>NES-32 Nucleic Acid Extraction System</b>	P111-1011√*	Analyzer Manual		Magnetic Separation Analyzer	Serum, Plasma, Whole blood, Swab, Feces or Urine	1 Unit/Kit
<b>Nucleic Acid Extraction Kit (ready-to-use)</b>	P121-1301√*	Extraction Plate Protease K	Carrier RNA Tip Comb	Magnetic Beads	Serum, Plasma, Swab, Sputum	32 Tests/Kit
<b>Nucleic Acid (DNA) Extraction Kit</b>	P121-1101√*	Tip Combs 96 Deep Well Plates Magnetic Beads Liquid Paraffin Proteinase K	Wash Solution-1 Wash Solution-2 Lysis Solution Elution Solution	Magnetic Beads	Serum, Plasma, Swab, Feces or Urine	32 Tests/Kit
<b>Whole Blood Genomic DNA Extraction Kit</b>	P121-1111√*	Tip Combs 96 Deep Well Plates Magnetic Beads Liquid Paraffin Proteinase K	Wash Solution-1 Wash Solution-2 Lysis Solution Elution Solution	Magnetic Beads	Whole blood	32 Tests/Kit
<b>Nucleic Acid (RNA) Extraction Kit</b>	P121-1121√*	Tip Combs 96 Deep Well Plates Magnetic Beads Liquid Paraffin	Wash Solution-1 Wash Solution-2 Lysis Solution Elution Solution	Magnetic Beads	Serum, Plasma, Swab, Feces or Urine	32 Tests/Kit
<b>Nucleic Acid (DNA) Extraction Kit (ready-to-use)</b>	P121-1201√*	Tip Combs Extraction Plate Proteinase K		Magnetic Beads	Serum, Plasma, Swab, Feces or Urine	32 Tests/Kit
<b>Whole Blood Genomic DNA Extraction Kit (ready-to-use)</b>	P121-1211√*	Tip Combs Extraction Plate Proteinase K		Magnetic Beads	Whole blood	32 Tests/Kit
<b>Nucleic Acid (RNA) Extraction Kit (ready-to-use)</b>	P121-1221√*	Tip Combs Extraction Plate		Magnetic Beads	Serum, Plasma, Swab, Feces or Urine	32 Tests/Kit
<b>Viral DNA/RNA Isolation Kit</b>	P121-1291√*	Lysis Solution Wash Solution-1 Wash Solution-2 Elution Solution	Proteinase K Spin Columns Collection Tubes	Spin Column	Serum, Plasma or Swab	32 Tests/Kit 50 Tests/Kit
<b>Viral Nucleic Acid Isolation Kit</b>	P121-1051√*	<b>Kit 1:</b> Buffer L Buffer WA Buffer WB <b>Kit 2:</b> Carrier RNA	Buffer TE Collection Tubes (2mL) Spin Columns	Spin Column	Serum, Plasma or Swab	32 Tests/Kit

√ CE marked \*FDA Device Listing

**We also offer other diagnostic and medical products for:  
Blood Glucose, Lateral Flow, Urinalysis Products, POCT Products, Immunoassay Products and more.  
Contact us for worldwide distribution and custom manufacturing (OEM) opportunities.**

✓ CE Marked for sale in the European Community 

All right reserved. Programs and Specifications subject to changes without prior notice, please contact local distributors.



aconlabs.com

**ACON Laboratories, Inc.**  
5850 Oberlin Drive, #340, San Diego, CA 92121, USA  
Tel: 1-858-875-8000  
Fax: 1-858-200-0729  
E-mail : info@aconlabs.com